

## How to create a new CFC Chart

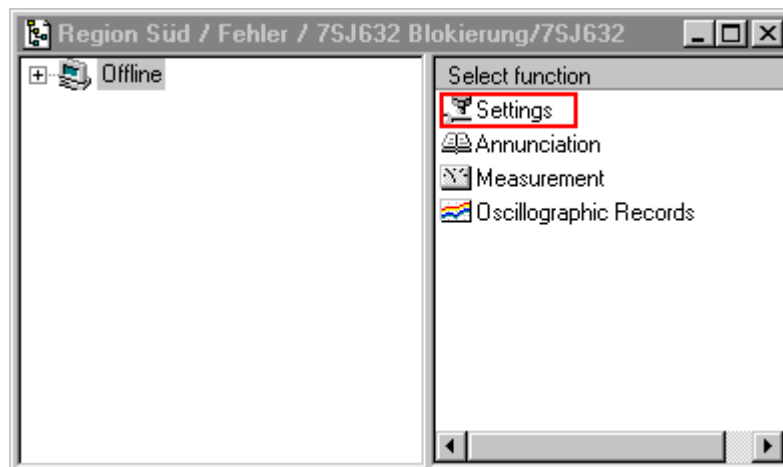
In the DIGSI 4 Manager first you must open a device (offline or online). Afterwards a new window appears (see picture 1). Please click on the icon *Settings*. Now all folders of the domain *Settings* will appear (picture 2). Click on the CFC chart and you will see the already existent CFC charts. Different devices have different default CFC charts.

If you want to create a new chart please go to the *Insert* menu in the menu bar of the window where you see the folder *Settings*. In the *Insert* menu is one option available called CFC chart. If you click on it a new CFC chart will appear in the right window (picture 3). The computer will name it with the default name CFC1.

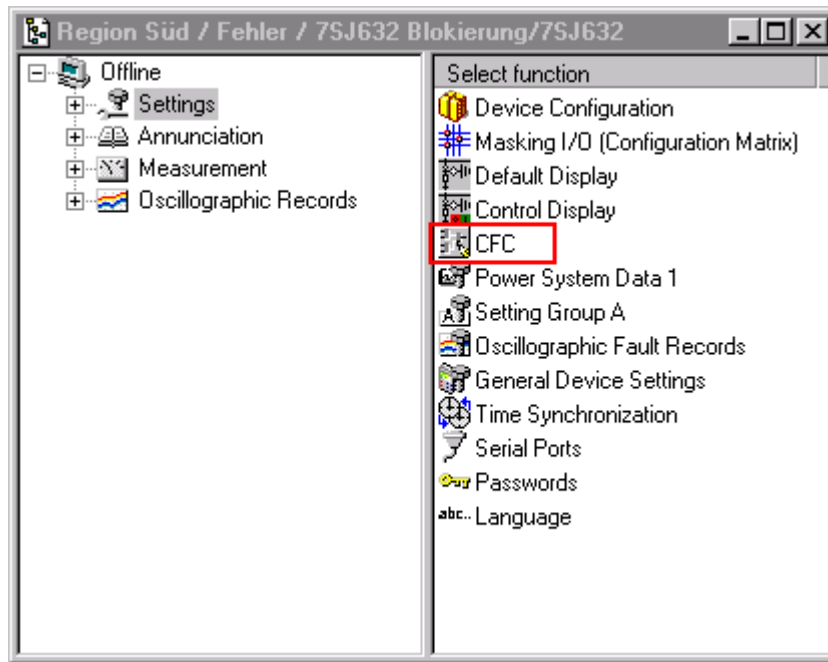
The name can be changed by clicking with the right mouse button on the new chart and choosing the item object properties. There the name can be typed again.

With double-clicking on the inserted chart you can open this new chart.

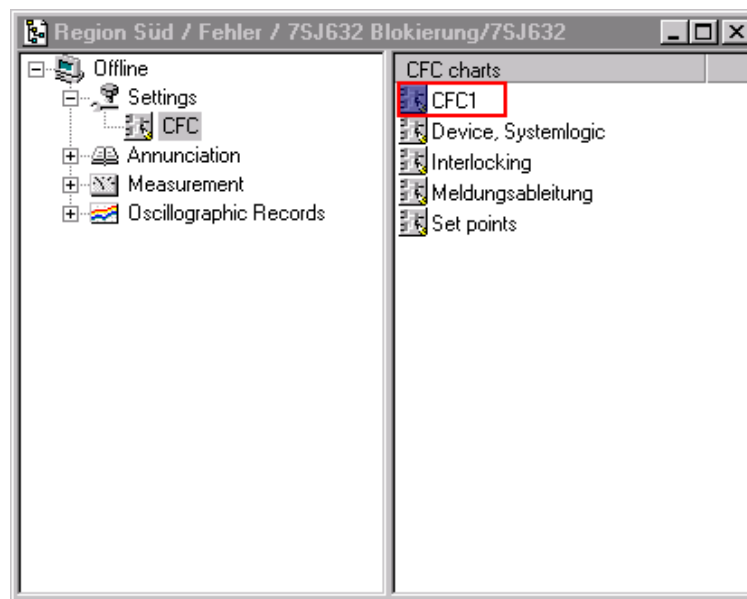
If you do not want to have already existent CFC charts you can simply delete them by the right mouse button and choosing the delete item or directly from the delete button on the PC keypad.



Picture 1: first view after opening a device parameter set



Picture 2: Folders in domain *Settings*



Picture 3 : After insert of a new CFC chart